

# Dehcho Land Use Planning Update



# Presentation Outline

## November 29, 2007

- Chair's Update
- Status of revisions
- Workshop/ Technical Sessions
- Conformity Requirements
- Upcoming Events
- Summary
- Last Update Sept 26/07

Further information,

Contact:

Michael M. Nadli, Chair/CEO

Dehcho Land Use Planning Committee

P.O. Box 199

Fort Providence, NT

X0E 0L0

Phone: (867) 699-3164

Email: [mnadli@dehcholands.org](mailto:mnadli@dehcholands.org)

Website: [www.dehcholands.org](http://www.dehcholands.org)

# Dehcho Land Use Planning Committee



# Chair's Update

- Dehcho Land Use Planning Committee are conducting Workshop/Technical Sessions
- Facilitated Discussions
- Interest-based
- Reviewed 23 Conformity Requirements
- Moving into Zoning
- Commitment to complete revisions



# Status of Revisions

- Dehcho Land Use Planning Committee held two workshops:
  - November 6-8
  - October 2-4
- Dealt with 23 of 25 Conformity Requirements (CR's)
- CR's are currently being reviewed by all parties
- December 11-13 will deal with Conformity Requirements and begin an introduction to Zoning
- Workshop/Technical Session is proposed for January 15-17, 2008

# Workshops/ Technical Sessions

- Proposed idea of Workshop, August 24, 2007 Committee Meeting
- Apart from formal Committee Meetings
- Workshop format- informal & facilitated discussions
- Resource People
- Examining current wording of Conformity Requirements
- Discussion of Intent and purpose, identify issues with CR's, possible solutions, action
- Re-drafting text of CR's

# Conformity Requirement

- Conformity Requirements (CR) are requirements that, upon implementation of this Plan, a land use must meet in order to receive authorization

# Conformity Requirements (CR's)

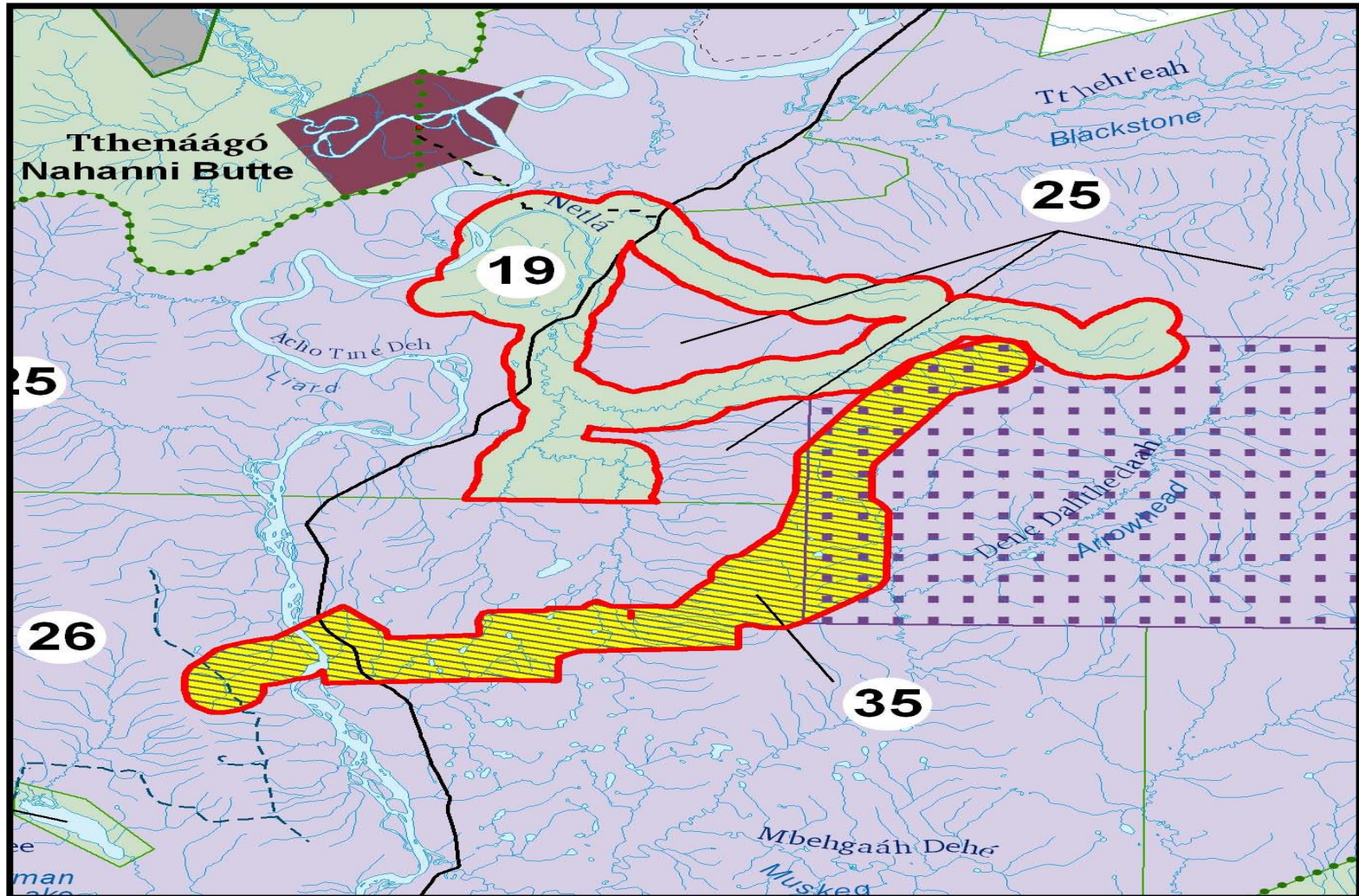
- Land Use Zones
- Mackenzie Valley Pipeline
- Use and Recognition of Traditional Land Use and Cultural Knowledge
- Protection of Significant Traditional Land Use and Occupancy Sites
- Plant Gathering Areas
- Community Involvement
- Non-exclusive Geophysical Surveys
- Public Infrastructure
- Granular Resources
- Transportation Corridors
- Feeder Pipelines
- Netla-Arrowhead Special Infrastructure Corridor
- Commercial Fishing
- Water Monitoring/Management (Drinking Water)
- Water Monitoring/Management (Aquatic Environment)
- Water Monitoring/Management (Hydroelectric Development)
- Mine Reclamation Planning and Security
- Revegetation
- Timber Recovery
- Big Game Outfitters
- Fishing Lodges
- Agricultural Practices
- Digital Pre- and Post-Operation Mapping
- Cumulative Effects Management
- Significant Environmental and Habitat Features



# Netla-Arrowhead Special Infrastructure Corridor

- CR # 12 (1) Responsible authorities will not authorize the development of a pipeline in Zone 25 or Zone 26 to allow for the commercialization of existing discoveries in the Netla-Arrowhead corridor and surrounding areas unless
- a) The pipeline is located in the Netla-Arrowhead Special Infrastructure Corridor (Zone 35) shown on Map 1:
  - b) The Acho Dene Koe Band, Fort Liard Metis Local 67, the Sambaa K'e Dene Band and the Na?ahdee First Nation work together to maximize benefits, consistent with section 42 of IMA, from the proposed development;
  - c) The proposed pipeline and infrastructure avoids the most sensitive ecological and cultural areas and minimizes impacts to traditional land use and occupancy activities in the area through appropriate mitigation;
  - d) The proposed infrastructure minimizes the area affected, the intensity of disturbance, and use the best available technology to minimize environmental impacts; and
  - e) The applicant demonstrates meaningful community involvement with the affected First Nation (s) on the construction, operation, reclamation and abandonment fo the pipeline and associated infrastructure

# Netla-Arrowhead



# Parties Perspective on CR # 12- Netla-Arrowhead

- DFN: Reflection of Land Use Plan that promotes cooperative approach among communities
- GNWT: Interpret wording that there can't be any pipeline, including feeder pipelines
- GOC: Interpret to say that could prevent development in zones 25 & 26
- Possible Solutions:
  - Change/clarify that feeder pipelines are allowed, not pipeline
  - Revise definition for 'pipelines' and add definition of 'feeder pipelines'
- Actions:
  - Suggested rewording to be reworked by Mark and Petr.

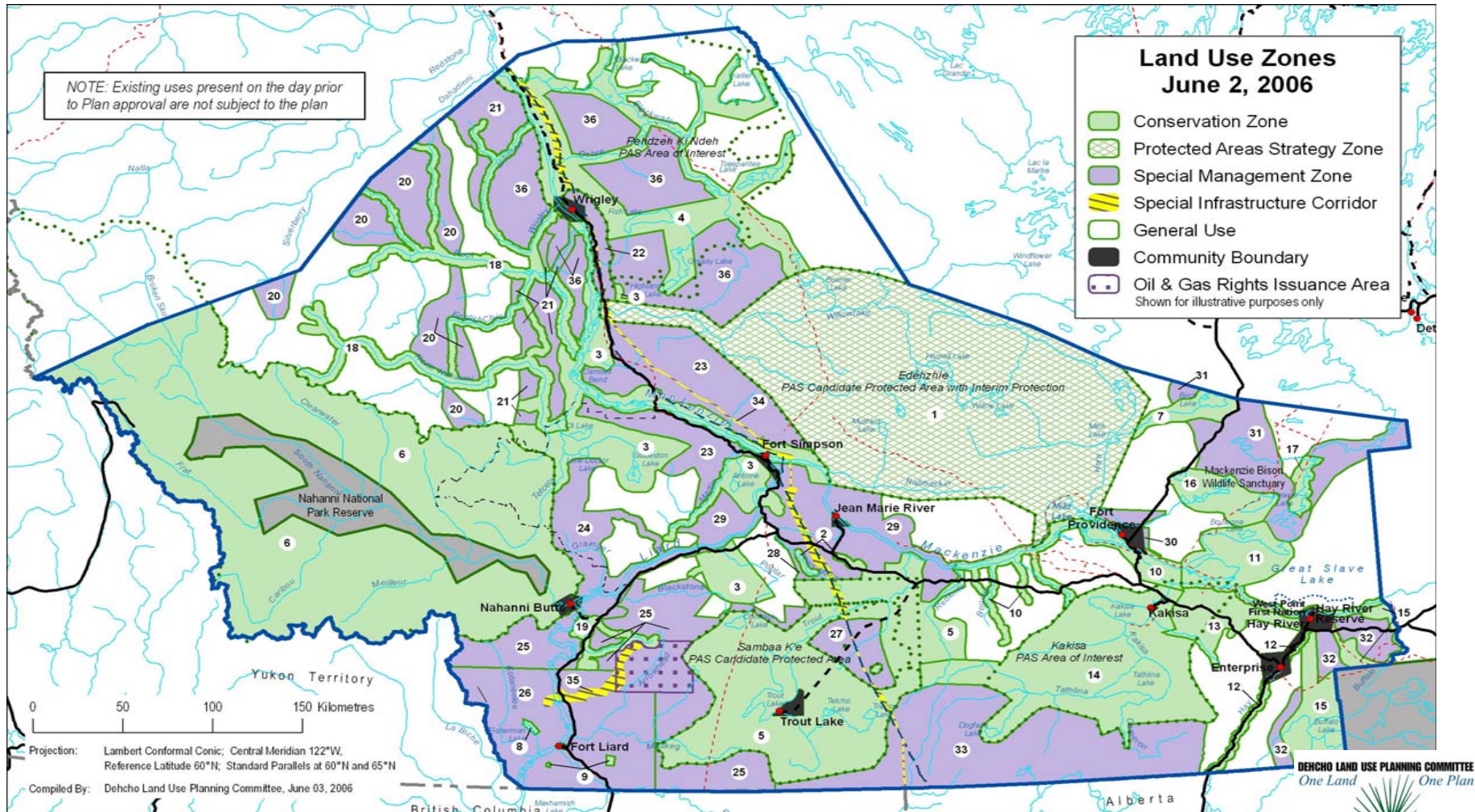
# CR # 12 Case Study

- Commitment and willingness to complete revisions
- Workshop approach promotes openness
- Current wording misunderstood
- Clear the air of false assumptions
- Understanding of each Parties' interests

# Upcoming

- Workshop/Technical Session # 3, December 11-13, 2007
- Agenda:
  - Day 1 & 2 Conformity Requirements
  - Day 3 Zoning
- Workshop # 4  
January 15-17, 2007
- Request for Proposals (RFP) for Land Use Planning Services

# Dehcho Land Use Plan



Update to main table Dehcho Negotiations  
November 29, 2007



# Zoning

- Zoning developed in consultation with communities and planning partners
  - Protect the Water-Dehcho and Liard River, important lakes and smaller rivers important to communities
  - Protect important areas for wildlife and traditional land use and occupancy
  - Conserve resources and use them wisely
  - Support community interests in PAS Areas
  - Address community concerns
  - Ensures regional connectivity and transportation considerations are addressed
  - Provide sustainable development opportunities for jobs and revenues for the Dehcho Territory
  - Protect existing uses, and
  - Consider the interests of all Canadians
- 5 Types of Zones:
  - Conservation Areas
    - 38.1%
  - Protected Areas
    - 12 %
  - Special Management
    - 24.4 %
  - General Use
    - 25.5 %
  - Special Infrastructure Corridor
    - Mackenzie Gas Project
      - 0.56 %
    - Netla-Arrowhead
      - 0.21 %

# Summary/Closing

- The Dehcho Land Use Planning Committee Members are strongly committed to completing revisions
- There have been 2 Workshops/Technical Sessions with 2 more planned in December and January 2008
- 23 of 25 Conformity Requirements have been dealt with
- Parties are reviewing wording of CR's
- Workshop Format promotes openness and on-going dialogue
- Workshop # 3, December 11-13, 2007 will begin an introduction to Zoning
- DCLUPC are making progress



# Mahsi!

Dehcho Land Use Planning Committee

P.O. Box 199

Fort Providence, NT X0E 0L0

Ph: (867) 699-3164

Fax: (867) 699-3166

Email: [mnadli@dehcholands.org](mailto:mnadli@dehcholands.org)

Website: [www.dehcholands.org](http://www.dehcholands.org)

