

# Mineral Priority Areas of the Deh Cho Territory - Synoptic Level -

MPA (% Area)	Synoptic Priority Ranking	Potential Deposit Types By Synoptic Ranking
A (5%)	High to Very High	Very High: - Skarn W High-Very High: - Skarn Au - Skarn Pb-Zn - MVT Pb-Zn - SEDEX - Vein Cu - Pegmatites
B (1%)	Very High	Very High: - MVT Pb-Zn
C (4%)	High	High: - MVT Pb-Zn
D (1%)	High	High-Very High: - Sediment-hosted Cu High: - MVT Pb-Zn - Vein Cu
E (11%)	Moderate-High	High: - MVT Pb-Zn Moderate: - Vein Cu
F (10%)	Moderate - Uncertain*	Moderate: - MVT Pb-Zn - Vein Cu * Not Assessed but potentially significant: - Diamonds
G (4%)	Low - Uncertain*	Moderate: - Vein Cu * Not Assessed but potentially significant: - Diamonds
H (65%)	Low-Uncertain*	Moderate: - Vein Cu * Not Assessed but potentially significant: - Diamonds

**A** Mineral Priority Areas  
(Note: See Table for Rankings)

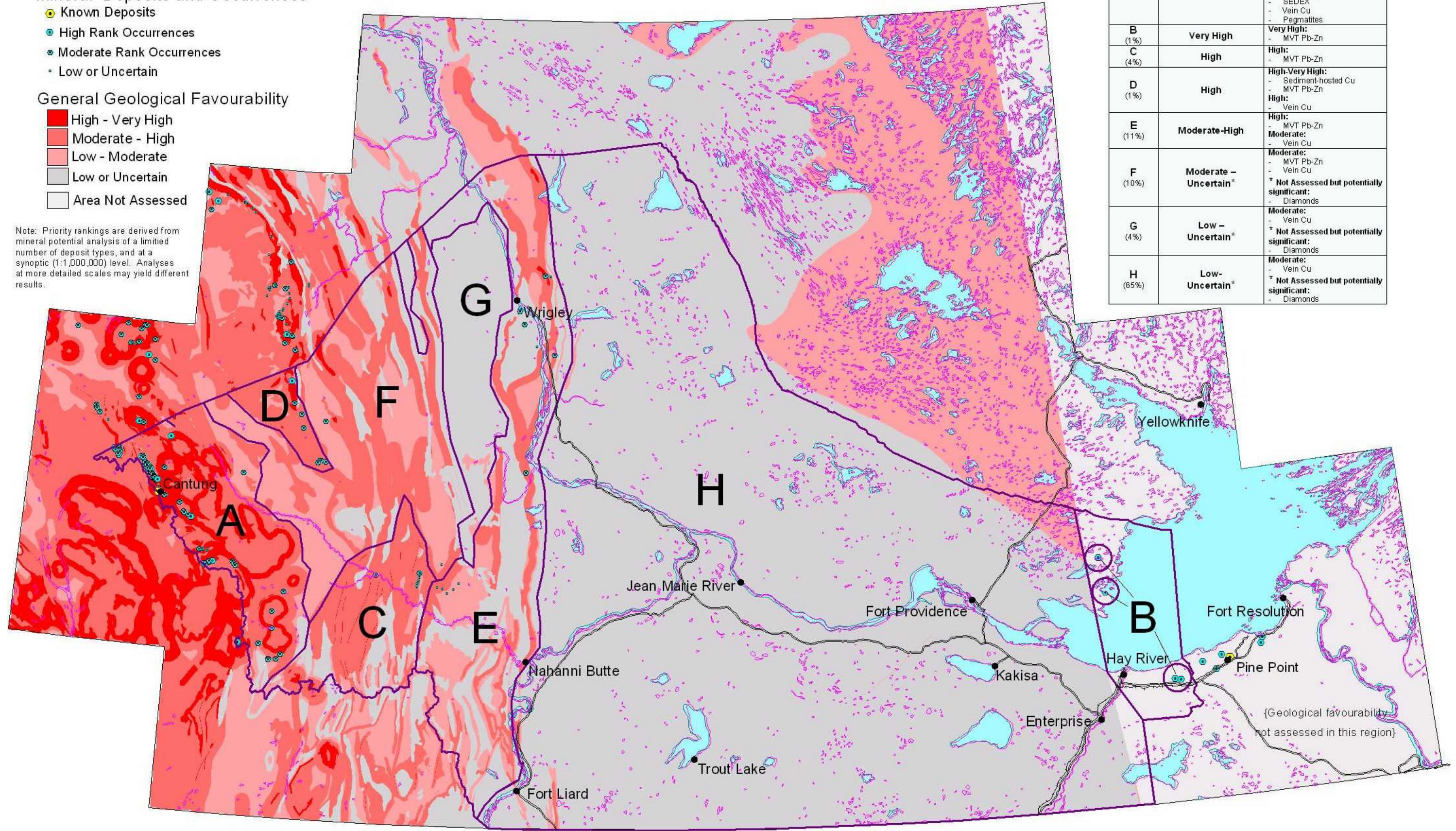
## Mineral Deposits and Occurrences

- Known Deposits
- High Rank Occurrences
- Moderate Rank Occurrences
- Low or Uncertain

## General Geological Favourability

- High - Very High
- Moderate - High
- Low - Moderate
- Low or Uncertain
- Area Not Assessed

Note: Priority rankings are derived from mineral potential analysis of a limited number of deposit types, and at a synoptic (1:1,000,000) level. Analyses at more detailed scales may yield different results.



{Geological favourability not assessed in this region}

50 0 50 100 Kilometers