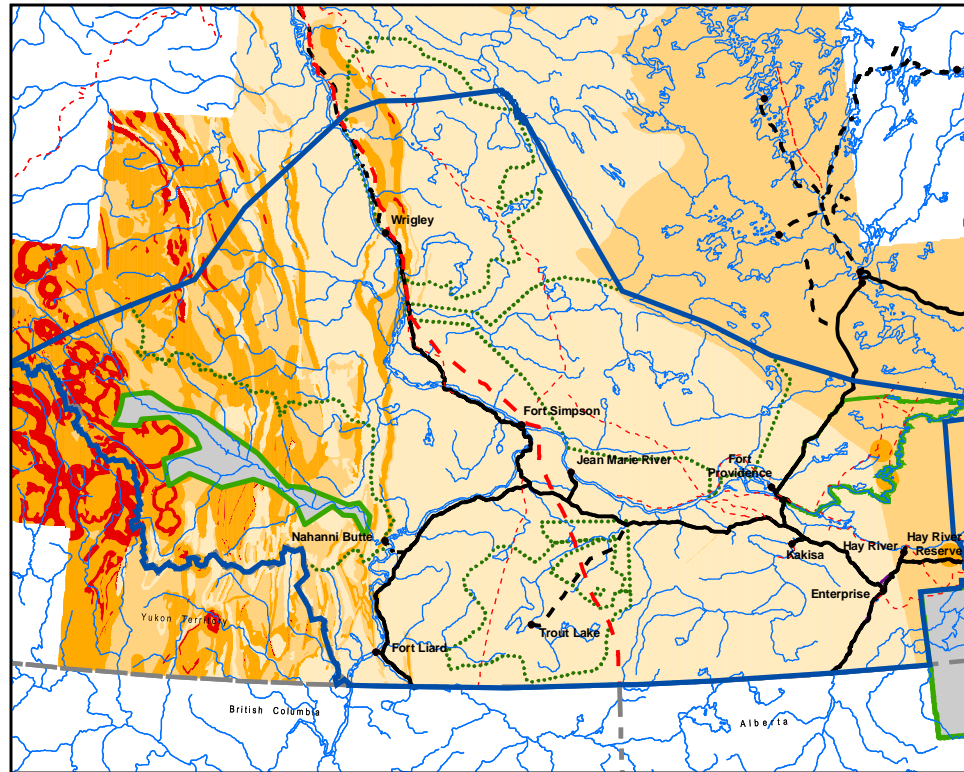


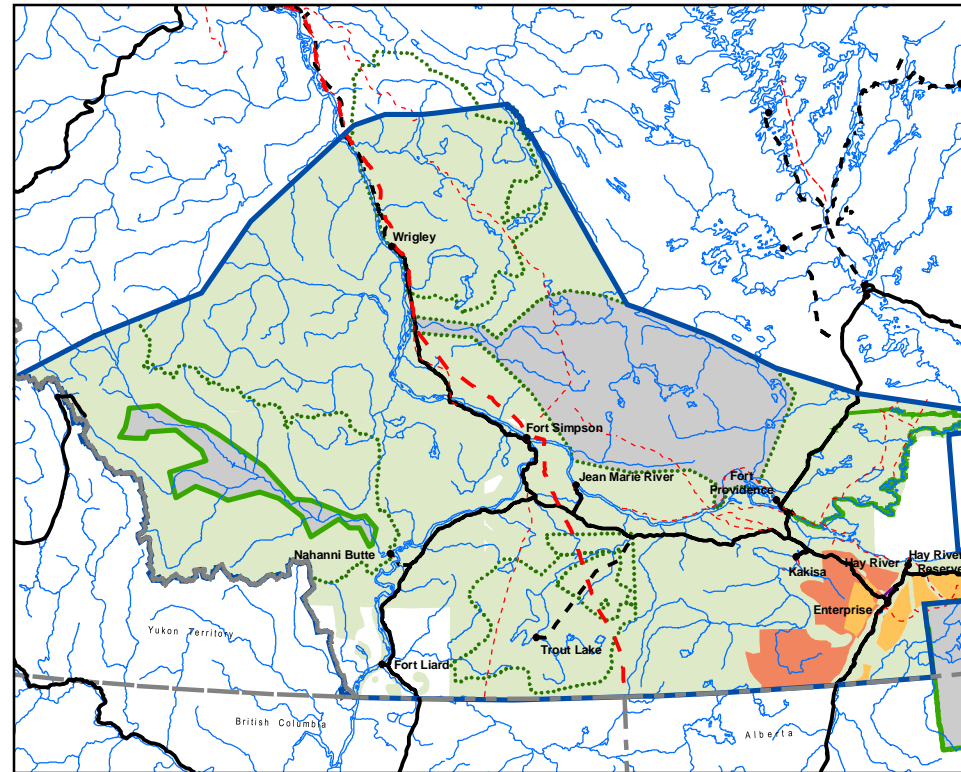
# Mining



**Potential as per Research**

Low or Uncertain
  Moderate
  High
  Very High

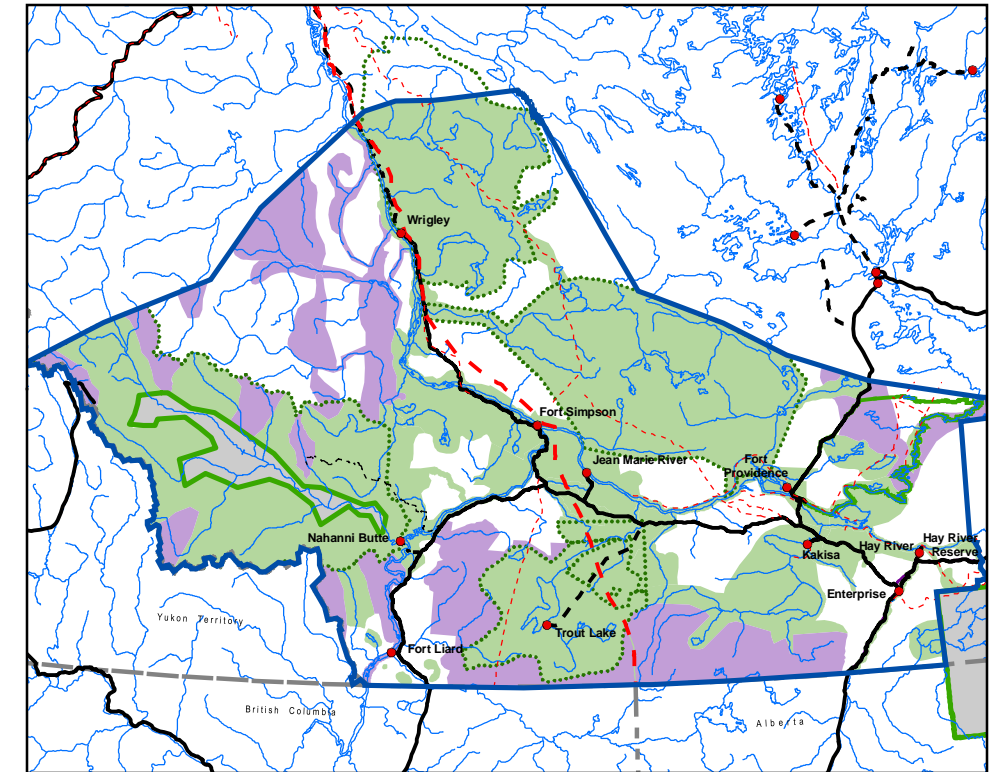
The Mineral Potential map reflects the known potential of the Dehcho. To date, there has been little exploration in the Dehcho on which to base concrete conclusions, so there is lower confidence in the overall accuracy of potential mapping by industry and government representatives. New discoveries could drastically change what is known about the potential of this region. That said, current mapping shows the greatest potential for minerals in the western tip of the Dehcho, extending into the Yukon Territory.



**Results of Community Mapping**

Supported
  Not Supported
  Differing Community Views

Communities have expressed considerable concern about the mining industry through our consultations, due in part to the legacy of past mining practices. They are concerned about the possible contamination of the environment, especially the water and wildlife on which they depend. Only Hay River Reserve supported mining outside of areas they wished to have protected.



**Draft Land Use Zoning**

Permitted
  Permitted with Special Terms
  Not Permitted

The Committee recognizes the concerns communities have with mining but have tried to address those concerns through Terms rather than restricting the use altogether. However, in areas put forth by communities for protection, mining will be restricted as an incompatible use. In the Greater Nahanni Ecosystem where the highest potential lies, the Committee has generally maintained the existing land withdrawals to await results from the detailed studies coming out of the Nahanni Park Expansion Process. Some boundary revisions were made to the north of the existing park to address new woodland caribou data from RWED and to better reflect existing mineral dispositions.