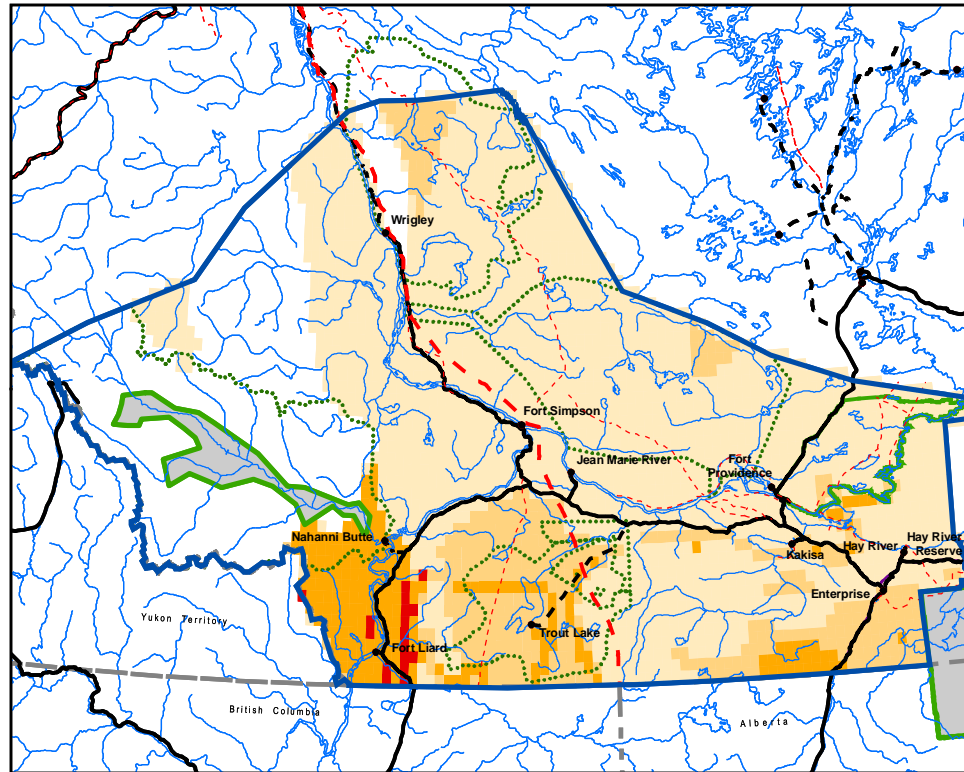


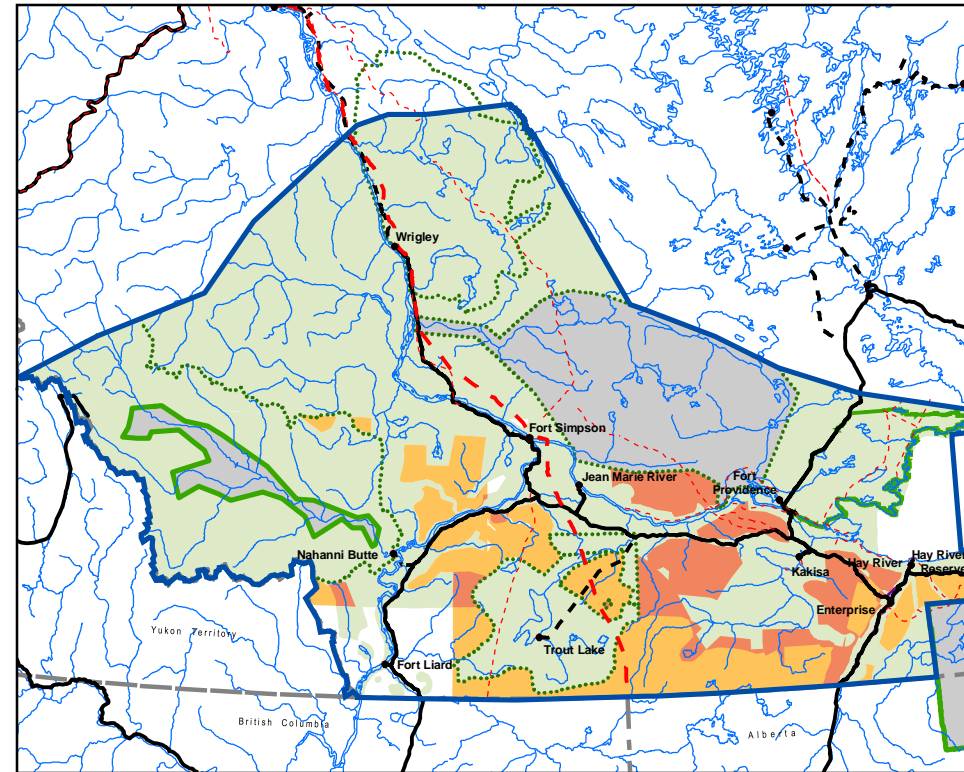
Oil and Gas



Potential as per Research

Low
 Moderate
 High
 Very High

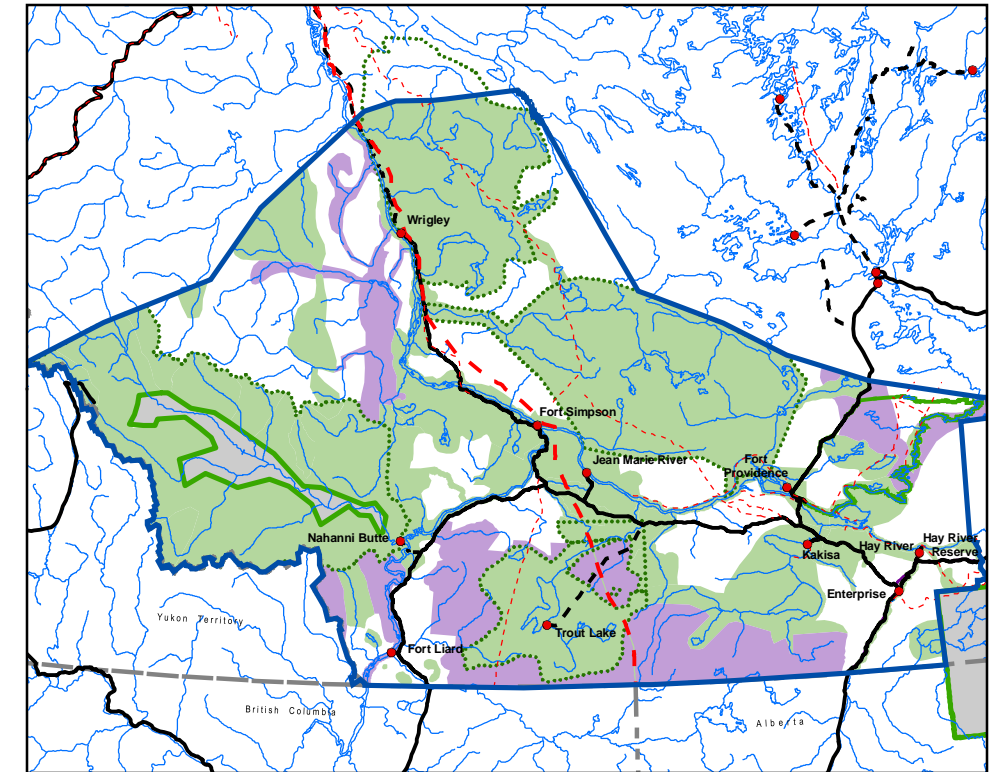
The oil and gas potential reflects the updated research completed by Ken Drummond in 2004 on oil and gas field size distributions. The complete report is available in the documents section of our website www.dehcholands.org. The highest geological potential is in the southwest corner of the Dehcho. There is also high geological potential in the Cameron Hills Trout Lake areas. However, the economic cost and exploration risk has to be factored in.



Results of Community Mapping

Supported
 Not Supported
 Differing Community Views

Communities recognize the economic benefits that can come from oil and gas and are aware of the areas where operations have focused to date. They wish to see operations continue in those areas, while restricting new developments in areas that are important to them for cultural or ecological reasons. Communities are generally supportive of oil and gas development in most of the high potential areas.



Draft Land Use Zoning

Permitted
 Permitted with Special Terms
 Not Permitted

Due to the economic importance of this resource use to the Dehcho, the Committee has kept as many high value areas as possible open to development, subject to the Terms of the Plan and existing regulatory requirements. While most of the southern Dehcho is in a Special Management to protect sensitive wildlife species, oil and gas is permitted. The Fort Liard region was left primarily in a General Use Zone due to strong community support of the industry. Trout Lake is currently trying to advance a large area for permanent protection under the PAS and so restricted support for oil and gas to the northeast of their traditional area.