



## Dehcho Land Use Planning Committee

---

January 30, 2006

Chief Roy Fabian  
Katlodeeche First Nation  
P.O. Box 3060  
Hay River, NT X0E 1G4

### **RE: Requested Changes around Zone 15 – Revised Draft Land Use Plan**

Dear Chief Fabian,

I would like to thank you and your community for your participation in the January 26, 2006 meeting in your community to discuss the community's interest in rezoning the area around Zone 15 of the Revised Draft Dehcho Land Use Plan. Please review the attached map that we digitized from this meeting and ensure it accurately reflects your wishes.

KFN staff also mentioned that they would send us digital data on four traditional trails in this area that the community wanted to ensure were protected. Please forward those files as soon as possible so we may determine how they align with the requested zone changes.

As per our discussions, the Committee will carefully consider your request for changes in this area, but we cannot guarantee that all changes will be made. We recognize KFN's concern that very little land was protected in this area in the earlier stages of planning and the community's recent efforts to correct this. We will take this into consideration. However, as you know, the Committee is facing significant challenges from other planning partners regarding the level of conservation in the Plan; further increases will add to those difficulties. Other Dehcho communities have also requested zoning revisions. The Committee will carefully consider all requests for revisions before making its decision and will revise the land use zones as appropriate to achieve the goals of the Dehcho territory.

You may want to speak to these proposed changes in your presentation at our upcoming Regional Forum to share your request for changes with other participants. If you have any questions, please feel free to contact me at (867) 699-3164 or [hwiebe@dehcholands.org](mailto:hwiebe@dehcholands.org).







Sincerely,

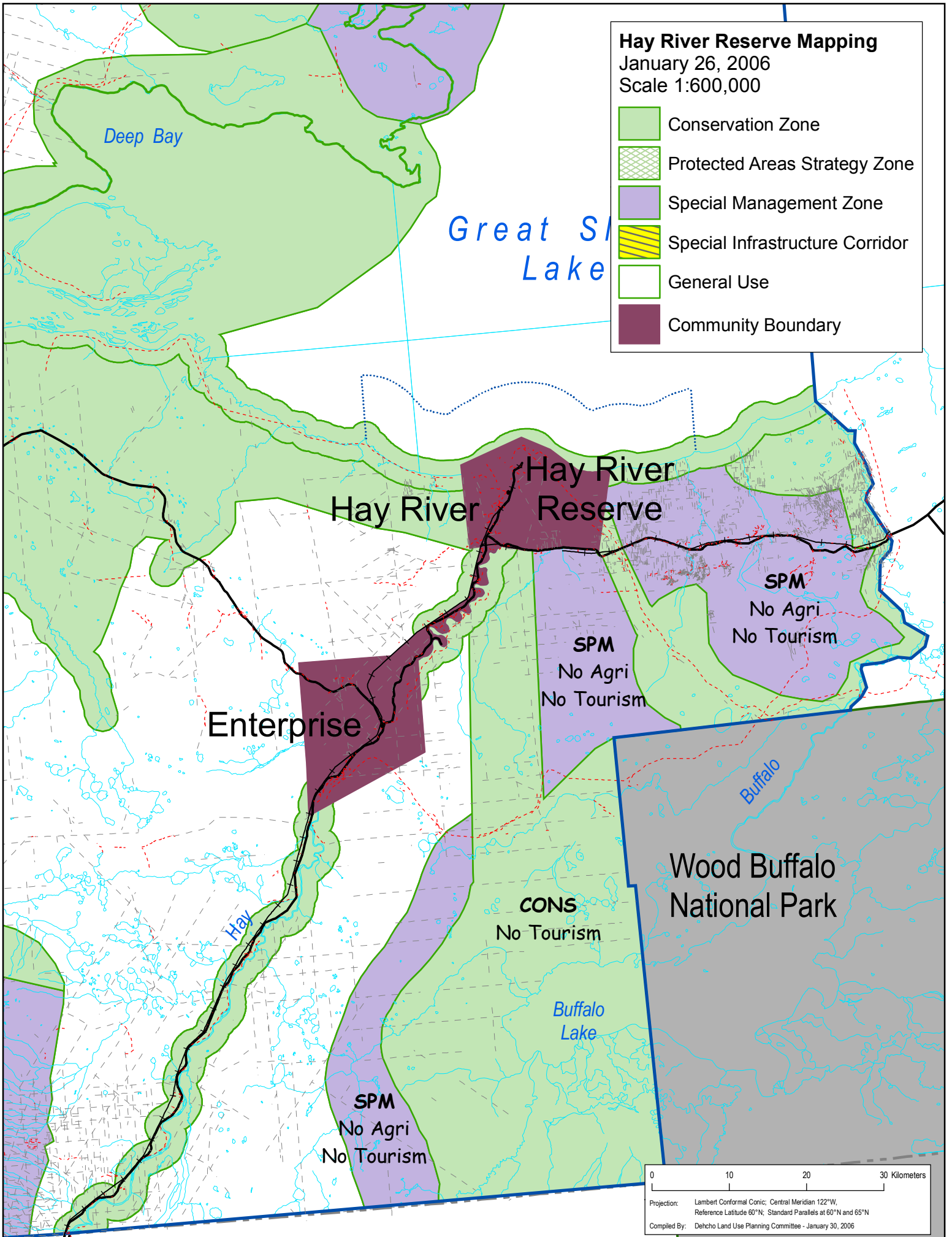
Heidi Wiebe, Executive Director  
Deh Cho Land Use Planning Committee

# Hay River Reserve Mapping

January 26, 2006

Scale 1:600,000

-  Conservation Zone
-  Protected Areas Strategy Zone
-  Special Management Zone
-  Special Infrastructure Corridor
-  General Use
-  Community Boundary



Projection: Lambert Conformal Conic; Central Meridian 122°W,  
Reference Latitude 60°N; Standard Parallels at 60°N and 65°N  
Compiled By: Dehcho Land Use Planning Committee - January 30, 2006