

## Heidi Wiebe

---

**From:** Freya Nales [FNales@wwfcanada.org]  
**Sent:** Tuesday, August 24, 2004 2:20 PM  
**To:** wfnwt@mailmarinenet.net  
**Cc:** hwiebe@dehcholands.org; mtemplin@dehcholands.org; Tony Iacobelli  
**Subject:** Assessment of Representation results for Deh Cho land useoptions



Summary of Deh  
Cho AoR.zip (29...

Hi Bill,

I have run the Assessment of Representation on the various land use options that were documented in the Draft Land Use Options atlas, and compared these results to the current deferrals. I've attached a document which summarizes the results. Please contact Tony or I if you have any questions.

Freya

Freya Nales - fnales@wwfcanada.org  
Spatial Analysis & GIS Manager  
World Wildlife Fund Canada

245 Eglinton Avenue East, Suite 410  
Toronto ON M4P 3J1  
tel: 416-489-4567 ext. 7270

## Summary of Analysis of Representation Results for Deh Cho Land Use options

- AoR was run on current withdrawals and options 3, 4, and 5- which have a conservation emphasis.
- Initially the AoR routine was run in ArcGIS but the results seemed to score unrealistically low for elevation. Since the ArcGIS version of the assessment of representation tool is currently being tested, the ArcView version of the AoR routine was run and these results are discussed below.

### Comparison to Current withdrawals:

- The current withdrawals fall somewhere between option 3 and 4 in terms of size and representation.
- Although option 3 is similar in overall extent of conservation zones to the current withdrawals, it is not nearly as valuable from a conservation standpoint because the conservation areas are more fragmented.

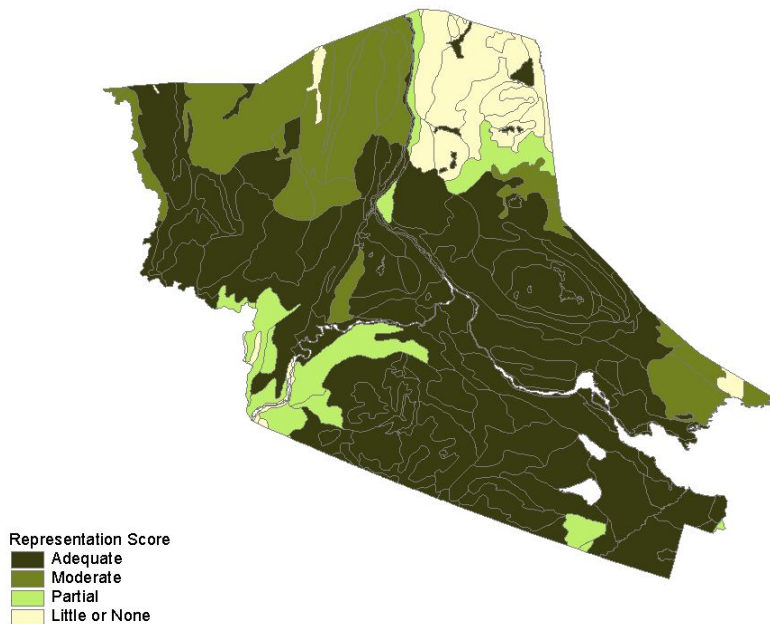
### Recommendations:

- Anything less than land use option 4 would not allow for a conservation network to be created that would adequately represent ecological diversity of the region.

### Representation Scores:

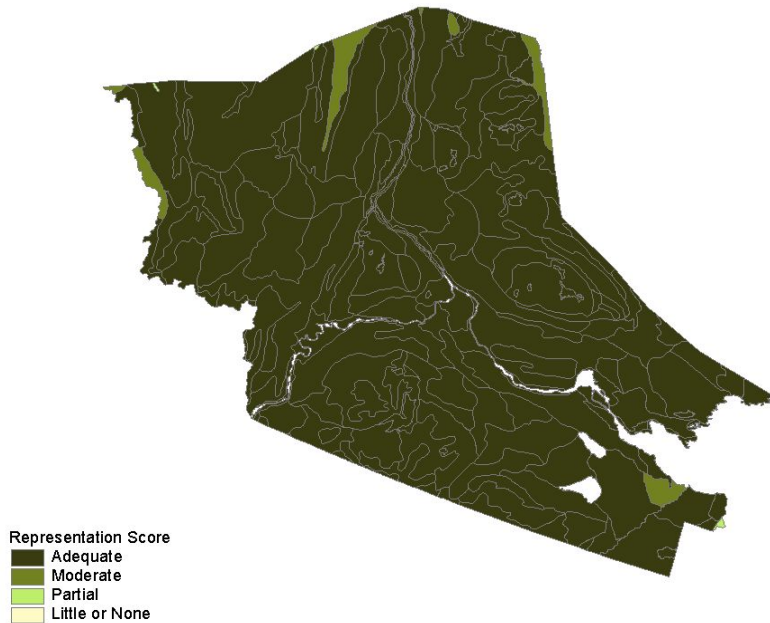
- Current Land Use options (ie. Current deferrals)
  - 9,668,201.301 hectares conserved (46% of Deh Cho Territory)
  - 70% scored adequate;
  - 9% scored moderate; 7% scored partial; 14% scored little or none.

#### AoR Results - Current withdrawals



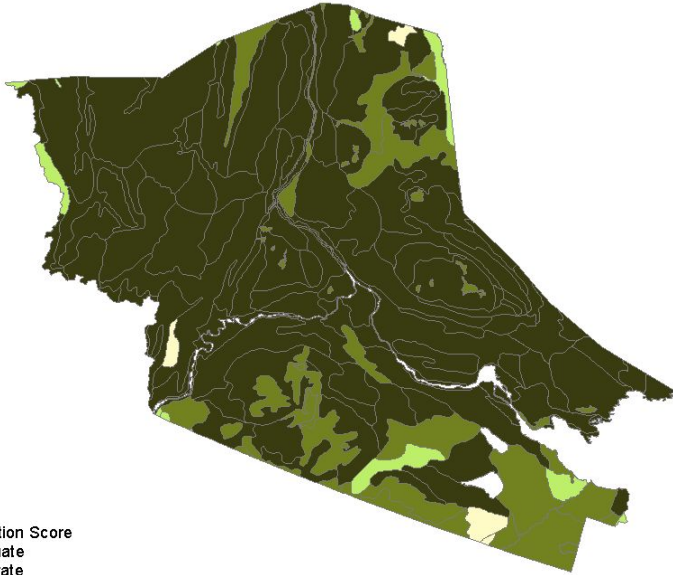
- Option 5:
  - 16,641,721.215 hectares conserved (79% of Deh Cho Territory)
  - 94% scored adequate;
  - 4% scored moderate, 2% scored partial;
  - enduring features that scored less than adequate were mainly disjunct polygons that were not represented elsewhere in the natural region outside of the Deh Cho Territory.

AoR Results - option 5



- Option 4:
  - 12,129,037.088 hectares conserved (58% of Deh Cho Territory)
  - 65% scored adequate;
  - 25% scored moderate, 7% scored partial; 3% scored little or none;
  - enduring features that scored less than adequate scored low on size scores A and B (size of protected area).

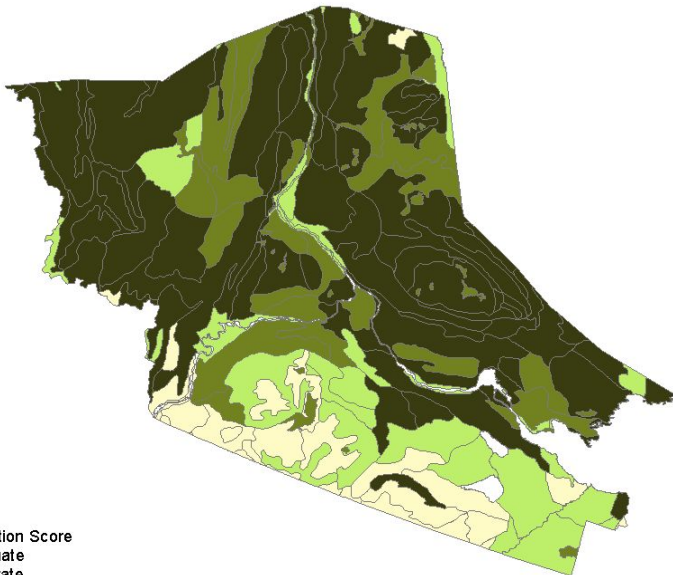
### AoR Results - option 4



Representation Score  
Adequate  
Moderate  
Partial  
Little or None

- Option 3:
  - 7,152,190.832 hectares conserved (34% of the Deh Cho Territory)
  - 38% scored adequate;
  - 24% scored moderate; 18% scored partial; 21% scored little or none;
  - The fragmented nature of the conservation options to the south, cause the enduring features there to score lower on size scores A, B and C (size of protected area and adjacency).

### AoR Results - option 3



Representation Score  
Adequate  
Moderate  
Partial  
Little or None